

BHOOMI SHAKTI SACHI FOUNDATION

2020-21

ADDRESS-253 SILVER PLAZA HALDHARU PATIYA
Haldharu,,Palsana,Surat,Gujarat,394310
E-MAIL- sanjeev_kumar78676@yahoo.com CONTACT
CONTACT NO -9374774931



Women Empowerment

INDEX

1. INTRODUCTION
2. PRIMARY GOALS
3. NOTICES
4. ABOUT US
5. CHILD EDUCATION
6. CHILD MARRIAGE
7. NUKKAD NATAK
8. WOMEN EMPOWERMENT
9. TAILORING/ CUTTING
10. BEAUTICIAN/PARLOUR
11. WOMEN EMPOWERMENT AWARENESS PROGRAM
12. EDUCATION RURAL AREA
13. STATIONARY DISTRIBUTION IN RURAL AREA.
14. SANITARY PAD CAMP WOMEN EMPOWERMENT IN RURAL AREA.
15. AWARENESS PROGRAM IN RURAL AREA
16. AWARENESS PROGRAM TO SELF-INDEPENDENT WOMEN.



WELCOME



INTRODUCTION

BHOOMI SHAKTI SACHI FOUNDATION is a multi-objective Tritis State government registered organization & and a team of like-minded, highly educated & motivated professionals & and humanitarians from various fields of development who are committed to working for the welfare & and development of society through an empathetic approach & to initiate ground-level activities across various fields of public importance like health, education, environment, women empowerment, & many more. We are multi multi-objective organization & so we work in each sector of public importance with collaboration with other organizations & and individuals and whatever available resources so that we can help many lives & and bring positive sustainable change on a larger scale. An ideal way to construct a prosperous nation by educating the children. This idea of thinking of society is also changing slowly. More and more no. of women are getting a quality education. But the true meaning of women's empowerment will be achieved when gender inequality is eliminated. We need to give equal opportunities to women for equal pay, and equal respect as equal to men.

PRIMARY GOALS

BHOOMI SHAKTI SACHI FOUNDATION rural and urban youth and inculcate a spirit of reaching heights with whatever resources.

We aim to help rural youth have that escape velocity that causes them to escape the gravitational pull that holds them back and the propensity to believe that achieving heights is not our cup of tea but of the rich and the belief that all the comforts are meant for the elite, we are here to break this myth. The ideology that drives **BHOOMI SHAKTI SACHI FOUNDATION** is based on the non-negotiable principle that every person should have access to quality formal education as a matter of right. Apart from academics, we greatly emphasize the significance of vocational training and life skills, thus working towards providing employable industry training skills to the unemployed youth foundation. Its focus groups include youth from rural and urban Below the Poverty Line (BPL) youth and women. The focus on mainstreaming i.e. education with employability is the root of our philosophy. The expertise of the Global Welfare foundation lies in working with the marginalized community. Considerably that is also, one of the major sectors, where maximum intervention is needed. They are also the communities, which have time and again been excluded from the purview and scope of national programs that have otherwise claimed major impact.

NOTICES

BHOOMI SHAKTI SACHI FOUNDATION *has been working for the underprivileged women of gujrat , especially the needy children and women, for the past one and a half years. As a women development organization, we welcome all well wishers and volunteers in our desire to enlighten the unfortunate and destitute by getting cooperation from different corners of the world.*

*We are an **foundation** that is devoted to achieving our mission of " . Our team has a common vision of reaching the ~~hed~~ and untouched practically. From the beginning, we are trying to provide housemakers and unemployed youths a platform where they can support their family.*

All our activities and plans of us till now run smoothly because of the help and support of our kindest donors, volunteers, and active members. We are very much grateful to them and hoping that in the future they will be with us on this journey.

ABOUT US

THE BHOOMI SHAKTI SACHI FOUNDATION WE serve as a guiding light, steadfast in our

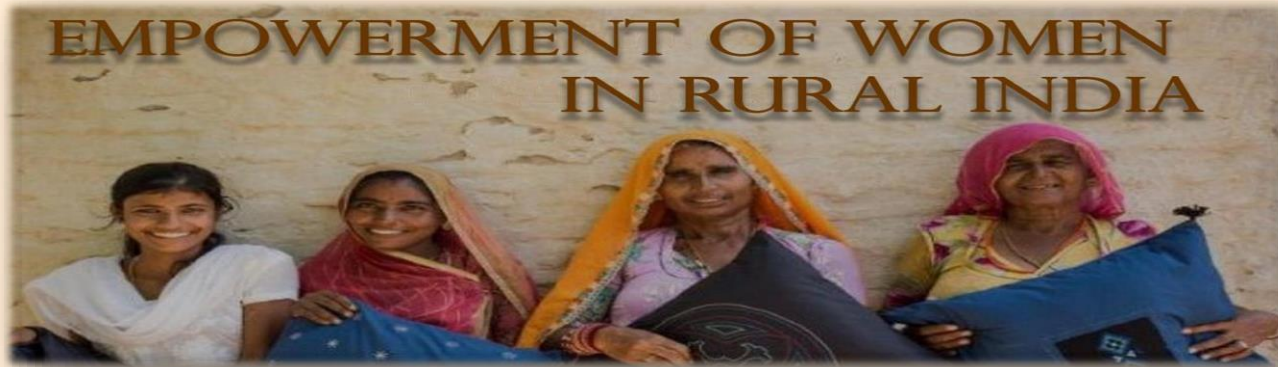
- mission to ignite profound change within our
- community and the natural world. Our resolute
- dedication centers on fostering all-encompassing growth in individuals, forging an all-encompassing trail towards a more brilliant, sustainable future

▪ FOR EVERYONE

BHOOMI SHAKTI SACHI FOUNDATION actively supports and undertakes initiatives to save the environment and eliminate social issues by organizing awareness programs and camps.

WOMEN EMPOWERMENT

WOMEN EMPOWERMENT IN RURAL AREAS IS A CRUCIAL ASPECT OF SUSTAINABLE DEVELOPMENT, AS IT NOT ONLY PROMOTES GENDER EQUALITY BUT ALSO CONTRIBUTES TO THE OVERALL WELL-BEING AND PROGRESS OF COMMUNITIES. RURAL WOMEN OFTEN FACE UNIQUE CHALLENGES, INCLUDING LIMITED ACCESS TO EDUCATION, HEALTHCARE, ECONOMIC OPPORTUNITIES, AND DECISION-MAKING PROCESSES. HERE ARE SOME KEY AREAS TO FOCUS ON FOR PROMOTING WOMEN EMPOWERMENT IN RURAL area.









OUR PROGRAM





1. Education: Enhancing access to education for girls and women in rural areas is fundamental. This includes both formal and informal education, as well as vocational training. Educated women are more likely to make informed decisions about their lives, health, and family.

2. Healthcare: Improving healthcare access and awareness is crucial for the well-being of rural women. This involves not only addressing reproductive health issues but also providing general healthcare services. Health education programs can help women make informed choices regarding family planning, nutrition, and disease prevention.

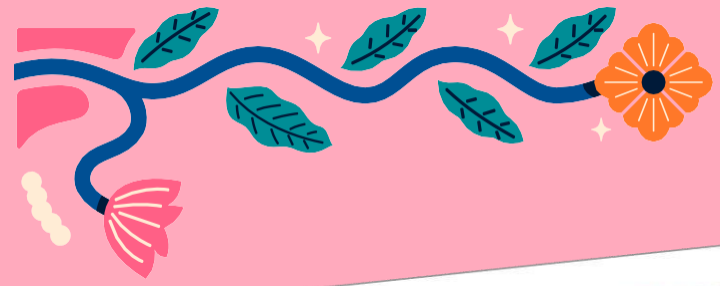
3. Economic Empowerment: Facilitating economic opportunities for rural women is vital. This can be achieved through skill development programs, entrepreneurship training, and access to credit and financial resources.

Encouraging the establishment of women's cooperatives and self-help groups can also enhance economic independence.

4. Land and Property Rights: Ensuring that women have secure land and property rights is essential for their empowerment. Many rural women work in agriculture, so having access to and control over land is crucial for economic stability and food security.

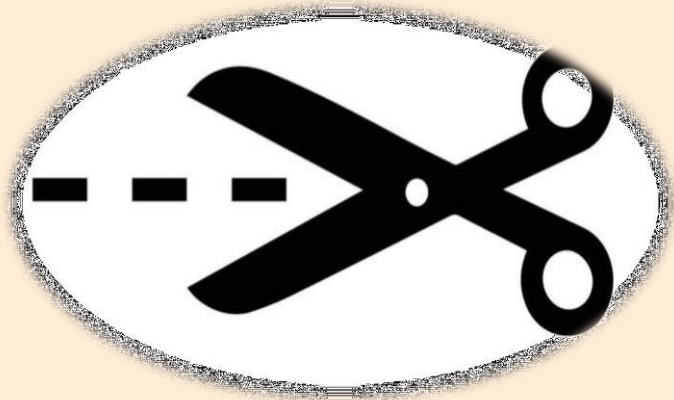
5. Technology and Connectivity: Bridging the digital divide in rural areas can empower





TAILORING/ CUTTING

Cutting and tailoring in rural areas often involves a combination of traditional skills and contemporary practices. In many rural communities, people rely on locally available resources and simple tools to create clothing for personal use and for sale within the community. Here are some aspects to consider when discussing cutting and tailoring in rural areas.



स्वच्छता

श्री प्रेमाभिषेक

हमारे यहाँ शादी और किसी भी विशेष प्रयोजन के लिए महिला व पुरुष के ड्रेस भाड़े पर मिलते हैं

हमारे यहाँ शादी और किसी भी विशेष प्रयोजन के लिए महिला व पुरुष के ड्रेस भाड़े पर मिलते हैं

हमारे यहाँ शादी और किसी भी विशेष प्रयोजन के लिए महिला व पुरुष के ड्रेस भाड़े पर मिलते हैं

हमारे यहाँ शादी और किसी भी विशेष प्रयोजन के लिए महिला व पुरुष के ड्रेस भाड़े पर मिलते हैं

हमारे यहाँ शादी और किसी भी विशेष प्रयोजन के लिए महिला व पुरुष के ड्रेस भाड़े पर मिलते हैं

हमारे यहाँ शादी और किसी भी विशेष प्रयोजन के लिए महिला व पुरुष के ड्रेस भाड़े पर मिलते हैं





Traditional

- **Hand-Craftsmanship:** In rural areas, manual techniques such as hand-cutting and hand-sewing are common. Skilled artisans may use basic tools like scissors, needles, and thimbles to create garments.
- **Local Textiles:** Rural tailors often work with locally produced fabrics. They might have expertise in handling specific types of materials that are prevalent in the region.





Cutting, tailoring training programme



When you enter this...
Learning...
Coolest...
for positive...
challenges...
Everything...





महिला बैठक

आयोजक - प्रतिरोध संस्था
प्रायोजक - श्रुति संस्था

संसाधन विकास कार्यक्रम

Development Program (EDP)

553 44135

Life is like a roller coaster.
It will only hurt when you get off it.

If you don't give up, you can't win.

NUMERICAL CHART	
1	11213141
2	12223242
3	13233343
4	14243444
5	15253545
6	16263646
7	17273747
8	18283848
9	19293949
10	20304050

BEAUTICIAN/PARLOUR

It soundslike you are involved in establishing a beauty parlor as part of an NGO (Non-Governmental Organization) initiative in a rural area. This is a commendable effort, and integrating a beauty parlor with an NGO center can have various positive impacts on the community. We provide beauty parlor education and how to earn money .







WOMEN EMPOWERMENT AWARENESS PROGRAM

A Women Empowerment Awareness Program is a targeted initiative designed to promote and enhance the rights, opportunities, and well-being of women in various aspects of life. Such programs aim to raise awareness about issues that affect women, foster gender equality, and empower women to achieve their full potential. Here's a general outline of what a Women Empowerment Awareness Program might include.





आप 135 करोड़ के लक्ष्य पर 19000 करोड़ के प्रयास

हमारे यहां शादी और किसी भी विशेष पर्यटन के लिए महिला व पुरुष के ड्रेस माडे पर मिलते हैं

खूबसूरत सिखन के लिए

पूजा के लक्ष्यी आभूषण

पूजा के लक्ष्यी आभूषण





been you
for the room
it's fun and
it's a great
idea and
it's a great
idea and

the best
of the
best



OUR PROGRAM





1. Education and Skill Development:

1. Promoting education for girls and women.
2. Offering skill development programs to enhance employment opportunities.

2. Health and Wellness:

1. Conducting health awareness campaigns.
2. Providing access to healthcare services.
3. Addressing issues such as maternal health and family planning.

3. Economic Empowerment:

1. Facilitating entrepreneurship training and support.
 2. Encouraging women's participation in the workforce.
 3. Promoting equal pay and job opportunities
-
-
- 

EDUCATION IN RURAL AREA

Improving education in rural areas is essential for fostering economic development, reducing poverty, and promoting social equality. Education can empower individuals, enhance livelihoods, and contribute to the overall well-being of rural communities. Here are key considerations and strategies for addressing educational challenges in rural areas.







1. Infrastructure Development:

1. *Build and maintain schools with adequate classrooms, libraries, and sanitation facilities.*
2. *Ensure the availability of clean water and electricity in schools.*
3. *Invest in transportation infrastructure to facilitate students' access to schools.*

2. Teacher Recruitment and Training:

1. *Recruit and train teachers who are committed to working in rural areas.*
2. *Provide ongoing professional development opportunities for teachers.*
3. *Offer incentives such as housing and financial support to attract and retain qualified educators.*

1. Curriculum Relevance:

1. *Adapt the curriculum to address the specific needs and context of rural communities.*
2. *Include practical skills and knowledge relevant to the local economy.*

STATIONARY DISTRIBUTION IN RURAL AREA.

It seems like there might be a slight error in your question, as "stationary distribution" typically refers to a concept in probability theory or Markov chains, and it may not directly relate to the distribution of stationary (writing materials and office supplies) in rural areas.

If you intended to ask about the distribution of stationery (writing materials, office supplies) in rural areas, here are some considerations.









1. Assessment of Needs:

1. Conduct a thorough assessment of the educational and office supply needs in the rural area.
2. Identify the types of stationery required for schools, community centers, and administrative offices.

1. Local Sourcing:

1. Explore local suppliers and manufacturers for stationery items to support the local economy.
2. Establish partnerships with nearby businesses for a sustainable and consistent supply.

3. Distribution Channels:

1. Set up efficient distribution channels to reach remote and rural areas.
 2. Collaborate with local community leaders, schools, and community centers to ensure equitable distribution.
-
-



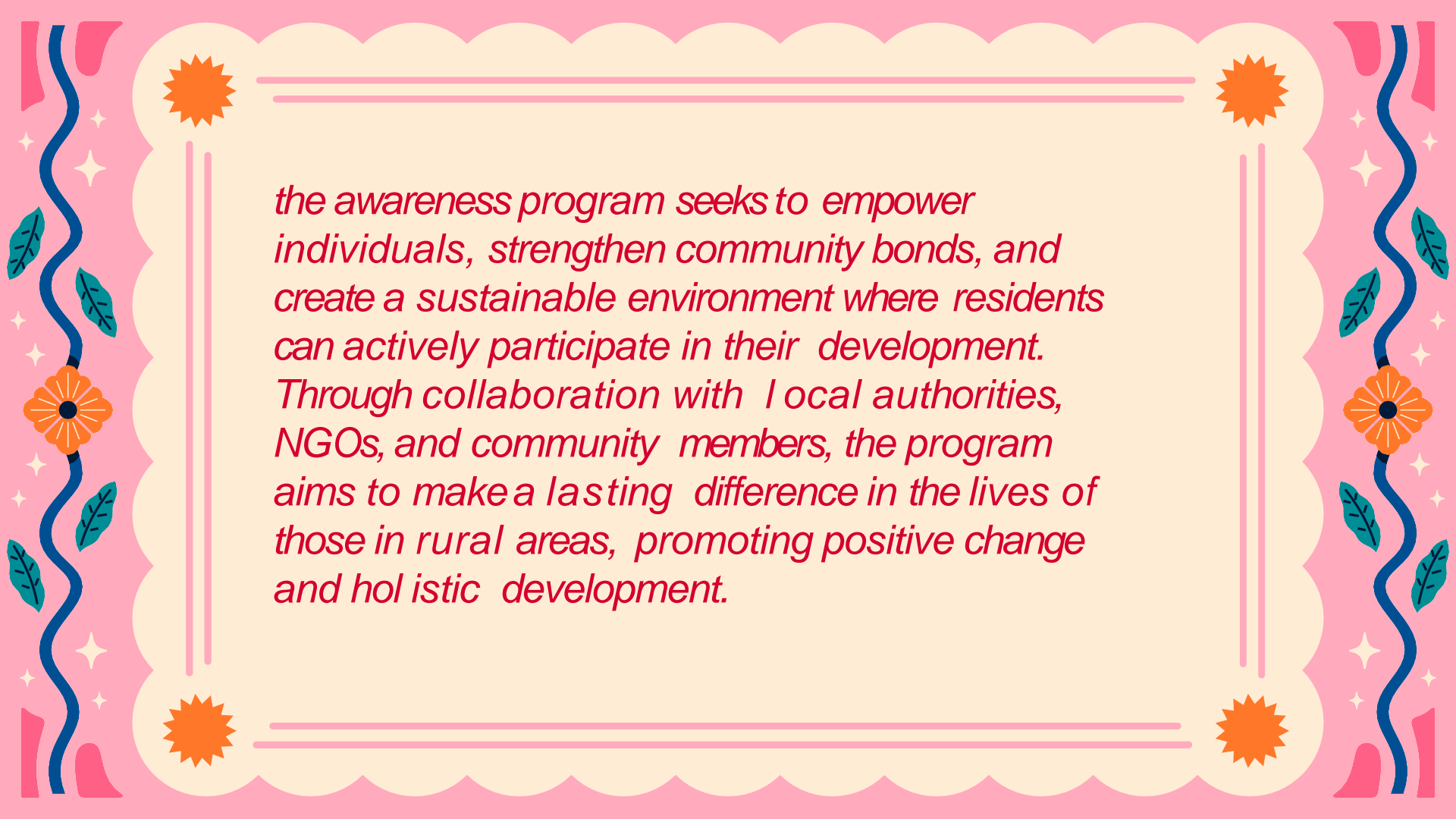
AWARENESS PROGRAM IN RURAL AREA

Implementing an awareness program in rural areas is crucial for fostering positive change and addressing local challenges. The program will focus on empowering communities through education and information dissemination. It will encompass various aspects such as health, education, and social issues, aiming to enhance the overall well-being of residents.

This long-term awareness initiative will involve community engagement strategies to ensure active participation. Workshops, seminars, and interactive sessions will be conducted to educate residents about health practices, educational opportunities, and social issues affecting them. Local leaders and influencers will play a vital role in disseminating information and encouraging participation.







the awareness program seeks to empower individuals, strengthen community bonds, and create a sustainable environment where residents can actively participate in their development. Through collaboration with local authorities, NGOs, and community members, the program aims to make a lasting difference in the lives of those in rural areas, promoting positive change and holistic development.



AWARNESS PROGRAM TO SELF- INDEPENDENT WOMEN.

Implementing an awareness program for fostering self-independence among women in rural areas is a transformative initiative aimed at empowering individuals and catalyzing positive change. This program will concentrate on imparting knowledge and skills that enhance economic autonomy, decision-making, and overall well-being.

The awareness campaign will include targeted workshops and training sessions focusing on entrepreneurship, financial literacy, and vocational skills. By providing practical insights into income-generating activities and small business management, the program aims to equip women with the tools necessary to establish and sustain their ventures.

WOMEN EMPOWERMENT




FEMINISM

VO
TE

EQUAL PAY





Digital platforms will be leveraged to ensure broader outreach and the dissemination of relevant resources. By emphasizing self-sustainability, the program seeks to break traditional gender norms, enabling women to make informed choices about their lives, finances, and community involvement.

In collaboration with local organizations, governmental bodies, and community leaders, this awareness program aspires to cultivate a sense of self-reliance, confidence, and independence among rural women, fostering a positive cycle of empowerment that extends beyond individual lives to contribute to the overall development of the community.



Self Help Groups

A Means to Women Empowerment

AWARNESS
PROGRAM TO
SELF-
INDEPENDENT
WOMEN.



REGISTRATION CERTIFICATE

आयकर विभाग
INCOME TAX DEPARTMENT



भारत सरकार
GOVT. OF INDIA

स्थायी लेखा संख्या कार्ड
Permanent Account Number Card

AALCB6115B



नाम / Name

BHOOMI SHAKTI SACHI FOUNDATION

निगमन/गठन की तारीख
Date of Incorporation/Formation
15/05/2023



Thank
you

ADDRESS-253 SILVER PLAZA HALDHARU PATIYA
Haldharu,,Palsana,Surat,Gujarat,394310
E-MAIL- sanjeev_kumar78676@yahoo.comCONTACT
CONACT NO -9374774931